

Registered Medical Assistant at BCCC

YOU BELONG HERE



A person wearing blue medical scrubs and a red stethoscope around their neck. They are wearing white gloves and holding a small white object, possibly a piece of gauze or a small container. The background is a plain, light-colored wall.

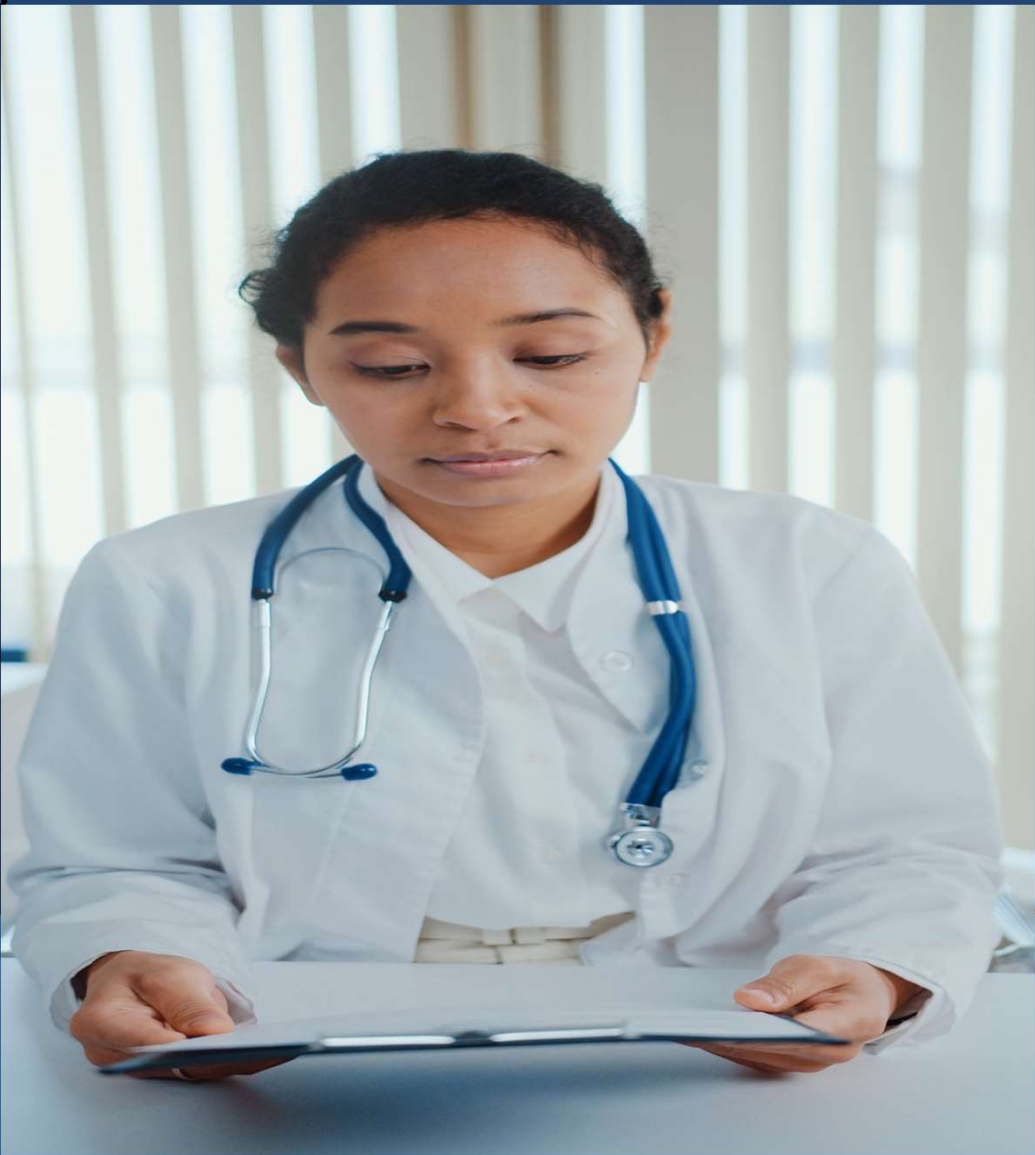
What is a Registered Medical Assistant, RMA?

RMA is a member of the healthcare profession. RMA will perform clinical and administrative duties under the direction of a medical provider. Clinical duties may include taking and recording vital signs and medical histories, preparing patients for examination, drawing blood, and administering medications as directed by medical provider. Administrative duties may include scheduling appointments, maintaining medical records, billing, and coding information for insurance purposes.

Registered Medical Assistant, RMA versus Certified Medical Assistant, CMA

RMA is a certificate program. CMA is a diploma program. Duties and pay are often the same.

Video by Mikhail Nilov



Employment Opportunities

- Hospital-(clerical)
- Primary Physician Clinic
- Outpatient Clinic
- *Specialty Healthcare Clinics- Pediatric, Gastroenterology, OB-GYN, Urgent Care, and Dermatology

NC average starting pay rate is \$14/hr.

*Not all inclusive

Video by cottonbro

Registered Medical Assistant-Let's get started

- **Prerequisites:** Career Readiness Certificate (CRC) of Bronze or Higher, High school transcript or High School Equivalency
Other options: College degree, or a Math and English college course with at least a C.
- CRC link for more information-[BCCC NCRC Testing Information](#)
- Register in Building 8. Payment and prerequisites are due at the time of registration. Financial/scholarship assistance may be available. Call 252-940-6375

[Registration and Payment](#)

[Financial Assistance](#)

- **Program requirements are discussed in detail on the first day of class.**

Program Requirements

- Hybrid course with online instruction. Student will need to be able to access Blackboard and attend in person for class, lab and clinical instruction.
- Student is responsible for: books, background check, immunizations, drug testing, and transportation to clinical site(s).
- Part II requires 160 hours of clinical experience at a clinical facility. Clinical facilities require a background check, drug testing, and current immunizations. (MMR, Varicella, 2-step TB, TDAP, COVID, Flu, Hep B, CPR)
- Students is responsible for purchasing CastleBranch. CastleBranch is a 3rd party vendor used for background check, drug testing and immunization documentation (\$90). Convictions or unsubstantiated drug tests are reviewed and determined by the clinical facility. Clinical facility decision is final.
- Student is responsible for purchasing Rotation Manager. Rotation Manager ensures student compliance with clinical facility. (\$29)
- Student is responsible for ensuring immunizations are up-to-date. Cost will vary depending on immunizations needed.
- Uniform: Price will vary depending on your place of purchase.



<https://discover.castlebranch.com/>



<https://rotationmanager.com/>

RMA Credentialing

- Individuals completing the RMA Program are encouraged to take a national certification exam.
- ASPT is a National Certifying Agency.



Registered Medical Assistant

Part I- Registration-\$180, Course fees-\$5

Part II- Registration-\$180, Course fees-\$24.25

Contact Continuing Education for Scholarship Information

Continuing Education

252-940-6375 or 252-940-6263

Email: continuingeducation@beaufortccc.edu

jackie.butcher@beaufortccc.edu

Listed below are links to our website to assist you.

[Registration and Payment](#)

[Financial Assistance](#)

[Class Schedules](#)

